



**YANMAR**

WHEEL LOADER

# V4-7

[Gross] 30.5kW <40.9hp>



\* The machine in the picture is equipped with optional parts.



# Powerful & Efficient

To be productive, you need a lot of power.

With YANMAR you have the power to ascend slopes smoothly.

The engine delivers high output while meeting stringent environmental regulations.

The innovative engine design provides the additional power when you need it, paving the way towards your business's success.





\* The images shown here are for promotional purposes. \* The image may differ from the actual model on sale.  
\* The machine in the picture is equipped with optional parts.



# Details of V4-7

## Features

A LCD monitor with a LED back light clearly shows working conditions and maintenance information

▶ 11P

An outside engine stop switch to stop the engine in case of emergency

▶ 13P



\* The images shown here are for promotional purposes. \* The image may differ from the actual model on sale.

\* The machine in the picture is equipped with optional parts. \* Ground the bucket when leaving the operator's seat.



**Cabin**

A defroster for a clear view during winter

▶ 14P

**Cabin**

A non parallel wiper and washer tank that wipes a wide area efficiently

▶ 14P

A DPF electric control common rail engine manages both environmental ability and high output

▶ 6P

Have enough dumping clearance and reach

▶ 9P

A step and handle to easily get in and out of the machine

▶ 10P

A rear open hood with a wide opening makes maintenance easy

▶ 12P



# A clean and quiet diesel engine that works powerfully

Our YANMAR diesel engine provides outstanding high power and low fuel consumption, low NOx, and clean gas emission.

It provides a stable output and fast response in slopes without giving the operator any stress as well as in low temperature or high altitude

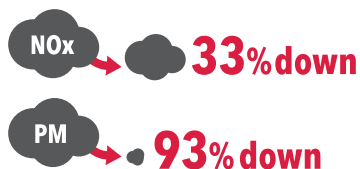


## Clean diesel engine **4TNV88C-NKAH 30.5kW** (Gross)

Compliant with EPA Tier 4 standards

\* Picture of engine shown for illustration purpose only.

### ● A much cleaner gas emission



[compared to former machines]

A comparison between the non-road 2006 standard to 2014 standards of machines with engine output more than 19kW, less than 37kW

### ① DPF \*1 collect PM※(SOOT)



The minuscule amount of PM in the emissions gas is captured by the Diesel Particulate Filter (DPF), preventing its escape into the atmosphere and resulting in unparalleled environmental performance.

Three unique, automated regeneration technologies inhibit the development of soot.

| Self regeneration                             | Assisted regeneration | Reset regeneration |
|---|-----------------------|--------------------|
| <b>Regenerate automatically while working</b> |                       |                    |

\* A manual regeneration may be necessary depending on work conditions.

### ② Cooled EGR

Decreased NOx by recirculating gas emission



An Exhaust Gas Recirculation (EGR) system partially cools the exhaust gas and mixes it with suction air and circulates it within the cylinder. This process lowers the burning temperature inside the cylinder and decreases nitric oxide (NOx). The EGR valve controls the circulating amount of EGR depending on the density of the intake oxygen which reacts to the suction temperature and altitude. It allows a stable combustion control of fuel in every working conditions.

### ③ 4 Direct fuel injection system

Achieve low emission with high burning efficiency



### ④ Common rail system

Control fuel injection with an electric control



The Tier 4 engine uses a fully electronically controlled common rail and fuel injection system. At ignition, the system instantaneously collects and analyzes information such as the outside temperature and altitude (the air's oxygen concentration level), engine load conditions and DPF temperature for precise control of the fuel injection timing, fuel quantity and number of injection times for combustion control down to the millisecond that in turn reduces PM and NOx emissions.

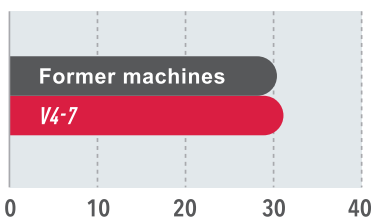
\*1. Diesel Particulate Filter (DPF) refers to the removal of particulate matter contained in exhaust emissions. \*2. Soot and other particulate matter  
 •Use Yanmar g engine s specialized o il for c ommon r ail e ngines e quipped w ith a Yanmar DPF.





**Even having a clean and quiet diesel engine, its performance is improved over former machines.**

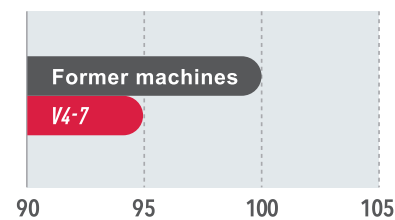
**Engine output comparison**  
(kW)



**Engine power comparison**

KEEP →

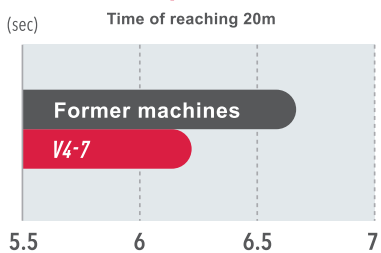
**Noise level comparison**  
(dB)



**Noise**

DOWN ↘

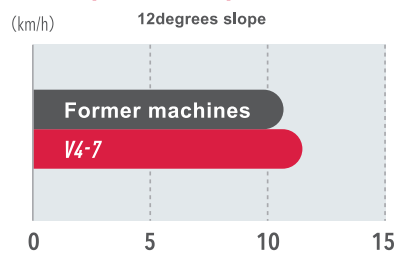
**Starting acceleration comparison**



**Acceleration ability**

UP →

**Uphill climbing speed comparison**



**Uphill climbing speed UP**

UP →

\* The images shown here are for promotional purposes. \* The image may differ from the actual model on sale.  
\* The machine in the picture is equipped with optional parts. \* Ground the bucket when leaving the operator's seat.

# Outstanding features contribute to excellent performance.



## ● Long Wheel Base & Wide Tread

Exceptional balance and wide treads deliver impressive stability when you are on the job or on the move, making it as easy as driving a car.

Wheel base

**1880mm**

Tread width

**1240mm**



## ● Dual Speed

Travel speed can be adjusted between two settings allowing you to alter the speed to suit a wide range of applications.

## ● Fully Automatic Mode

Press the accelerator and the machine will accelerate smoothly and change travel speed automatically.

## ● Low Speed Mode

Maximum travel speed can be fixed in low speed mode, a convenient feature for jobs in restricted area.

## ● F2 x R2 Lever

A single lever allows effortless shifting between forward and reverse. The safety lock incorporated into its design acts as a prevention against unintentional usage.



## ● Rear Axle Oscillation

Delivers strong performance on uneven ground, mitigating driver fatigue.





● **Auto Leveler**

Place the bucket evenly on the ground with just one lever. Boost productivity by transitioning seamlessly from dumping to scooping.



● **Noise Level Reduction**

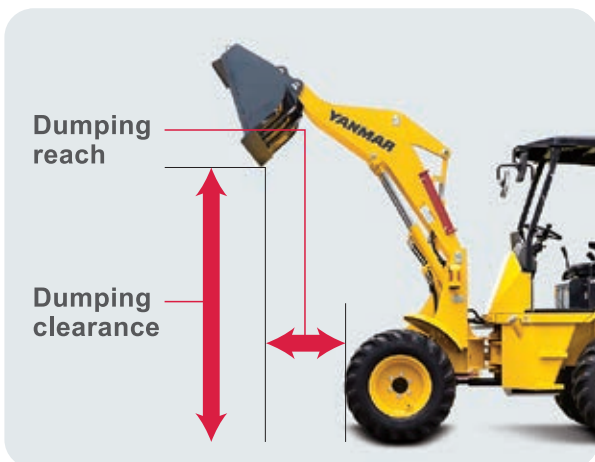
In addition to the faint engine sound, intake, exhaust, and hydraulic components have been analyzed and improved to deliver an extremely quiet operator experience.

Noise Level **5% improved** ( Compared to the previous model )



● **Dumping Clearance & Reach**

The capacity-enhancing design allows you to maximize productivity when truck loading.

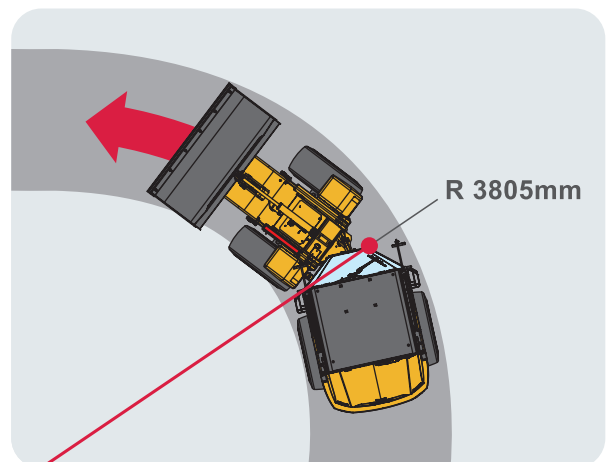


Dumping clearance  
**2420mm**

Dumping reach  
**790mm**

● **Tight-turning Radius**

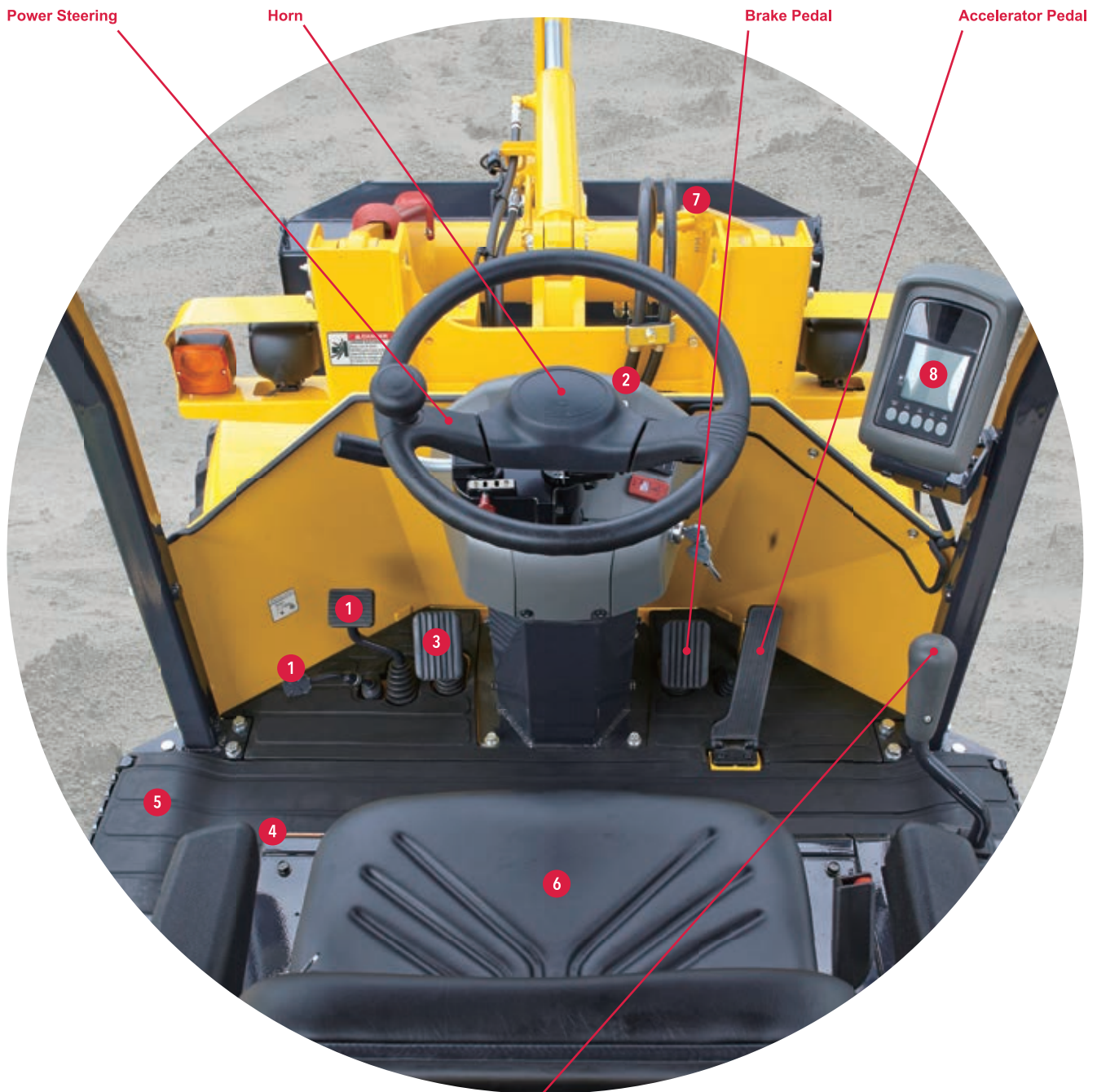
Articulated steering allows maneuvering in narrow spaces.



Min. turning radius  
**3805mm**

\* The images shown here are for promotional purposes. \* The image may differ from the actual model on sale.  
\* The machine in the picture is equipped with optional parts. \* Ground the bucket when leaving the operator's seat.

# Ease of Operations



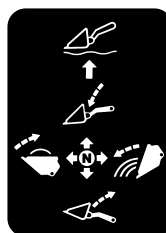
## ● Steps & Grips

Steps make entry and exit of the cab easier.



## ● Joystick for Bucket work

Raising and lowering the bucket, tilting, dumping and floating are all accomplished through the use of just one joystick.



## ● Lock Lever

The control lever can be locked, eliminating unintentional usage.





**1 Parking Brake and Release Pedal**



Simply press down on the pedal to apply the parking brake.

**2 Parking Brake Disengagement Lamp & Alarm**



In case you forget to put the parking brake on, an alarm and lamp will notify you.

**3 Inching Pedal**



A pedal engages engine transmission.

**4 External Power Socket**



With access to 12V power, devices such as cell phones can be easily recharged.

**5 Wide Entrance**



The wide entrance offers plenty of room to get in and out of the cab safely.

Floor width at entrance  
**300mm > 500mm**  
**70% UP** (Compared to the previous model)

**6 Suspension Seat**



The suspension seat absorbs shock making the operator experience smoother, comfortable and pleasant. It can also be tilted back into a reclining position.

**7 P.T.O.**

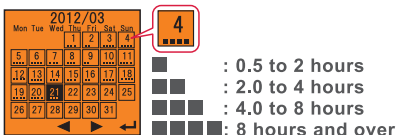


P.T.O. pipes at the front provide easy access for connecting a range of attachments.

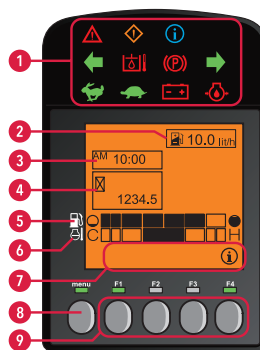
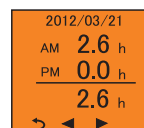
**8 The large LCD display includes an LED backlight making it easier for the operator to easily check information in the dark.**

It's easy to find out essential information related to operational status and errors with an easy-to-read monitor, LED indicator lamps and buzzer.

**LCD monitor sample screen**



**Daily operation hours separated by AM/PM\***



- Warning lamp
- Caution lamp
- Information lamp
- Direction indicator lamp
- Hydraulic oil temp. lamp
- Parking lamp
- High speed travel lamp
- Low speed travel lamp
- Battery charge lamp
- Engine oil pressure lamp
- 1** LED lamp blinks when displaying warning and information.
- 2** Fuel consumption
- 3** Clock
- 4** Hour meter
- 5** Fuel gauge
- 6** Water temperature meter
- 7** F1-F4 guidance
- 8** Switch to select menus/main menu
- 9** F1-F4 perform the operation displayed in guidance

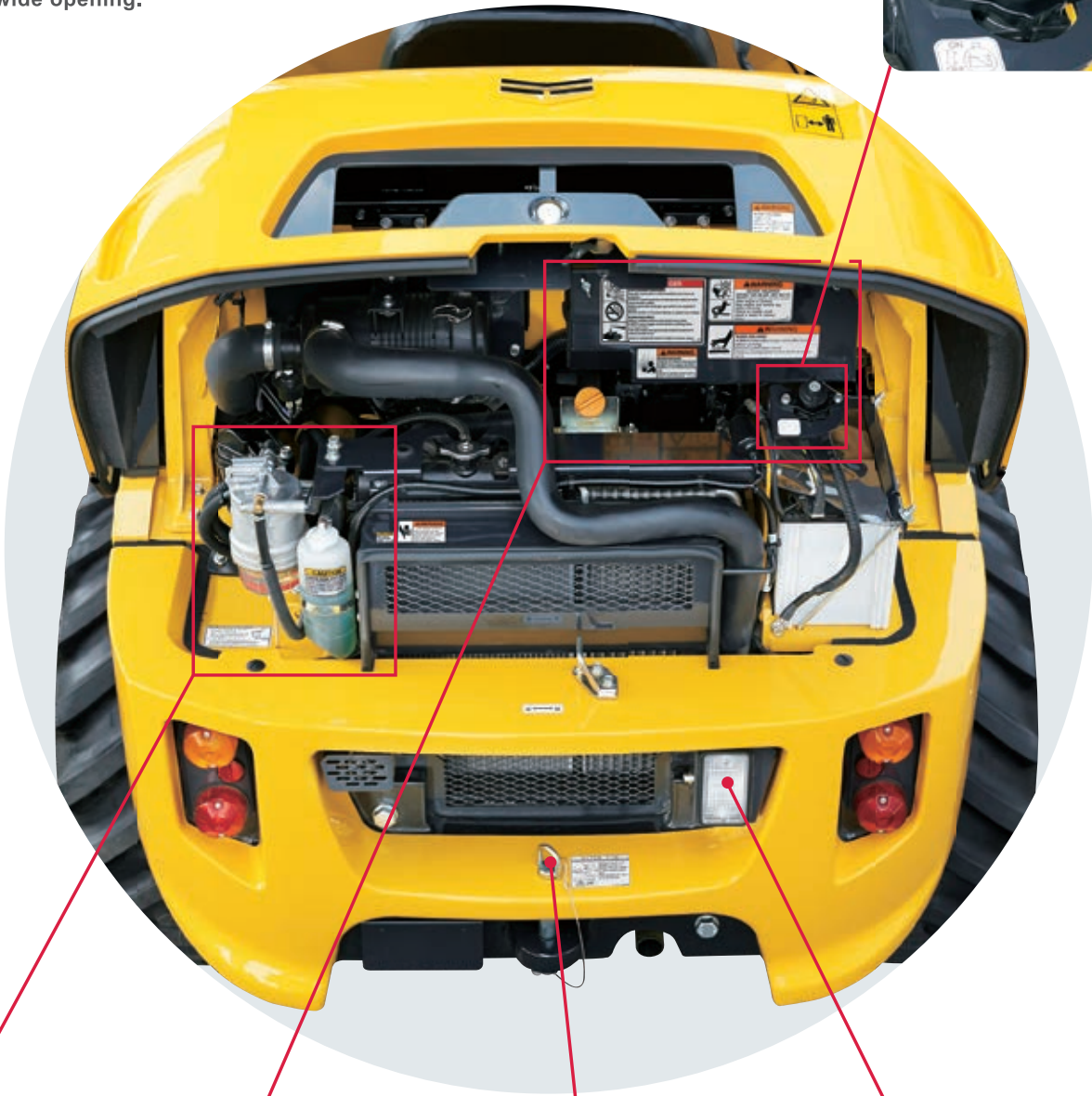
# Long machine life with easy maintenance access.

## ● Rear open hood

Able to carry out daily checks and maintenance easily and smoothly the a wide opening.

## ● Battery cut switch

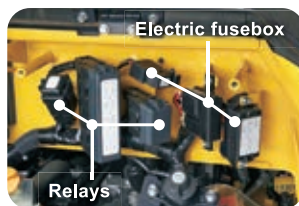
Preventing electrical discharge during long-term storage can be done simply with this switch.



## ● Filters are arranged to maximize convenience.



## ● User-oriented electrical system



## ● Towing hitch pin



## ● Reverse lights and Reversing alarm



The hitch pin allows for the convenient towing of attachments, providing greater work stability.

Both a reverse light and an alarm are activated when reversing to ensure maximum safety.



● **Hydraulic cylinder lock**

The boom can be locked when raised, allowing for safe inspections and maintenance.



● **Indicator light and Sidelight combination**

Both indicator lights and side lights are installed for additional safety.



● **Engine stop switch**

In an emergency, the engine can be switched off directly without the need to be in the operators seat.



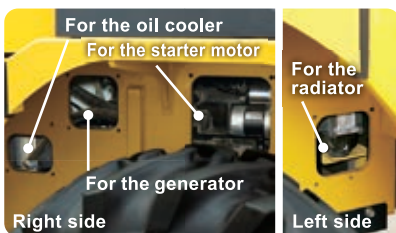
● **Beneath the floor maintenance**

The floor plate can easily be removed for quick access to the engine and power train.



● **Maintenance compartment**

The maintenance compartment offers ultra-convenient access to each part for highly efficient inspections and maintenance.



● **Counter weight**

A large cast iron weight helps protect the rear of the machine against damage arising from impact.



\* 1 Do not turn the battery cut switch off when the engine is running. It may cause damage or malfunction of the vehicle.  
 \* The images shown here are for promotional purposes. \* The image may differ from the actual model on sale.  
 \* The machine in the picture is equipped with optional parts. \* Ground the bucket when leaving the operator's seat.

# Many available options

A luxurious cabin meets the international ROPS/FOPS standards.

Cabin model



## ● Air conditioner



The air conditioner lets the operator adjust the temperature providing maximum comfort all year round.

## ● Defroster



The heater unit is ideally positioned to increase its effectiveness. Frost is removed in an instant, ensuring excellent visibility even in regions with snowfall.

Thawing speed **40% up**  
(Compared to the previous model)

## ● Sliding window



The left door is constructed with superior glass specifications that provide ample sunlight. The sliding window can be optimally adjusted to five levels, delivering more ventilation.

## ● Wide Entrance



The doors wide entrance makes entering and exiting the machine an easy task.

Entrance wide **660mm**  
**45mm improved**  
(Compared to the previous model)

## ● Windshield wipers



The non-parallel windshield wipers effectively cover a wider area of the windshield.

## ● Rear-view mirror



Allowing you to see what's behind you, the rear-view mirror provides an additional level of safety.

## ● Delivery system



A delivery system for front and rear windshield washer fluid is built standard, enabling both windows to be washed.

## ● Maximum speed limit lever (Inching Lever)



Travel speed can be limited for securing the necessary flow when using attachments required large flow.

## ● Radiator screen



The radiator screen helps prevent radiator clogging.

**SMARTASSIST**  
Remote

Providing services that keep you on track.

## SMARTASSIST Remote

\* Separate application required (free)



Scan for details

### ● Efficient use of machinery thanks to remote monitoring

Our construction equipment is equipped with GPS and communication terminals, allowing you to manage location information via the communication system. The system also lets Yanmar remotely monitor your machine, allowing us to keep on top of maintenance intervals, quickly identify machine trouble, and provide appropriate services and support at all times.



### ● Providing peace of mind, supporting your business

**Thief prevention tool**

Thief prevention feature emails you if the machine moves out of a pre-determined area.

**Error notification service**

Quickly identify location of error in the event of machine trouble.\*

**Maintenance management tool**

Manage inspection/ maintenance information.

**Operational status management tool**

Visualize operational status of machine.

**Work schedule creation tool**

Record work data and improve efficiency.

\* The contents displayed on the screen may differ.



## The Unsung Heroes Who Build Our Towns And Cities

You build the infrastructure and the foundations in our towns and cities.

Transforming the places where we stand today, into dreams of tomorrow.

You are the unsung hero.

The YANMAR mission is to provide machines and services that allow you to reach your full potential.

Built tough and with comfort in mind.

YANMAR construction equipment will help you get the job done with ease, regardless of the worksite.

When we make machines, we are dedicated to enabling you to perform at your best all of the time.

One example of this is our innovative True Zero Tail Swing Excavators that set the standard for safety and reliability, enabling operators to perform at their best in tight quarters. Yanmar was also the first to make compact diesel engines, and today we continue to make diesel engines ranging from

YANMAR was also the first to make compact diesel engines,

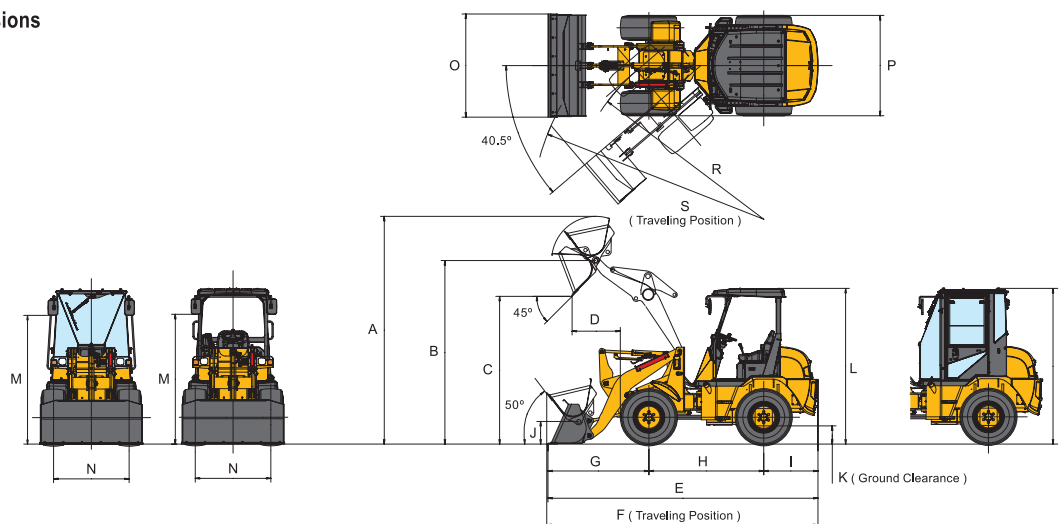
and today we continue to make diesel engines ranging from 4 to 4,800 kW.

Equipped with advanced engines and hydraulic systems, our construction equipment delivers better fuel economy, increased productivity and enhanced operability.

**YANMAR is the driving force behind the unsung hero.**

**BEST PERFORMANCE BY YOUR SIDE**

## ● Dimensions



(Unit:mm<ft-in>)

|      | A               | B               | C               | D             | E               | F               | G              | H              | I              | J             | K              | L              | M               | N              | O              | P              | Q              | R               | S               |
|------|-----------------|-----------------|-----------------|---------------|-----------------|-----------------|----------------|----------------|----------------|---------------|----------------|----------------|-----------------|----------------|----------------|----------------|----------------|-----------------|-----------------|
| V4-7 | 3730<br><12'3"> | 3005<br><9'10"> | 2420<br><7'11"> | 790<br><2'7"> | 4425<br><14'6"> | 4450<br><14'7"> | 1655<br><5'5"> | 1880<br><6'2"> | 890<br><2'11"> | 370<br><1'3"> | 295<br><0'12"> | 2555<br><8'5"> | 2115<br><6'11"> | 1240<br><4'1"> | 1690<br><5'7"> | 1645<br><5'5"> | 2545<br><8'4"> | 3200<br><10'6"> | 3805<br><12'6"> |

## Specifications

| Model                |  | V4-7  |   |
|----------------------|--|---|---|
| Type                 |  | CANOPY  | CABIN   |
| Engine               | Type                                       | Water-cooled 4-cyl. diesel engine                   |   |
|                      | Model                                      | 4TNV88C-NKAH  |   |
|                      | Output (Gross)                             | kW<hp> / min <sup>-1</sup>                          | 30.5<40.9> / 2500   |
|                      | Output (NET)                               | kW<hp> / min <sup>-1</sup>                          | 29.1<39.0> / 2500   |
| Performance          | Displacement                               | cm <sup>3</sup> <cu. in <sup>3</sup> >              | 2189<133.6>   |
|                      | Bucket capacity, std.                      | m <sup>3</sup> <yd <sup>3</sup> >                   | 0.5<0.65>   |
|                      | Operating load                             | kN<lb>  | 11.3<2535>  |
|                      | Lifting capacity at Low end / at MAX reach | kN (lb)   | 33.1<7441> / 23.8<5350>   |
|                      | Tipping load Straight / Full turn          | kN (lb)   | 27.0<6070> / 22.5<5058>   |
|                      | Breakout force                             | kN (lb)   | 24.5<5508>  |
|                      | Dumping clearance                          | mm<ft-in>   | 2420<7'11">   |
|                      | Traveling speed                            | km / h<mph>   | 19.0<11.8>  |
|                      | Oscillation angle                          | degree  | ±8  |
|                      | Min. tuning radius                         | mm<ft-in>   | 3805<12'6">   |
|                      | Min. ground clearance                      | mm<ft-in>   | 295<12">  |
| Electronic           | Battery capacity ( 5 hours rate capacity ) | Ah  | 72  |
|                      | Generator capacity                         | V / A   | 12 / 80   |
| Pto                  | Front Hyd.PTO Maximum flow                 | L<US gal> / min                                     | 56<14.8>  |
|                      | Set pressure                               | kPa<PSI>  | 20590<3000>   |
| Steering             | Type                                       | Center-pivot frame articulation with full hyd.power |   |
|                      | Articulate angle                           | degree  | 40.5  |
| Transmission         | Type                                       | Automatic hydrostatic                               |   |
| Drives               | Type                                       | 4-wheel drive                                       |   |
| Wheels               | Type                                       | 15.5/60-18-8PR                                      |   |
| Brakes               | Type                                       | Fully enclosed, mechanical, wet, multiple disc      |   |
| Operating Weight     |  | kg<lb>  | 3640<8025>   3865<8521>   |
| Transport Dimensions | L×W×H                                      | mm<ft-in>   | 4425×1690×2555<14'6"×5'7"×8'5">   4425×1690×2545<14'6"×5'7"×8'4"> |
| Filling Capacity     | Fuel tank capacity                         | L<US gal>   | 55<14.5>  |
|                      | Engine oil                                 | L<US gal>   | 7.4<1.95>   |
|                      | Hydraulic oil tank                         | L<US gal>   | 52<13.7>  |
|                      | Coolant                                    | L<US gal>   | 4.7<1.2>  |
|                      | Front axle / Rear axle                     | L<US gal>   | 7.5<2.0> / 9.5<2.5>   |

Please note that the standard equipment may vary from this list. Consult your Yanmar dealer for confirmation

## YANMAR CONSTRUCTION EQUIPMENT CO., LTD.

All data subject to change without notice.

Promotion Group  
Sales Planning Dept.  
Marketing & Sales Dept.  
1717-1, Oaza Kumano, Chikugo, Fukuoka 833-0055, Japan  
TEL. +81-942-70-8992  
FAX +81-942-53-6855  
yanmar.com