

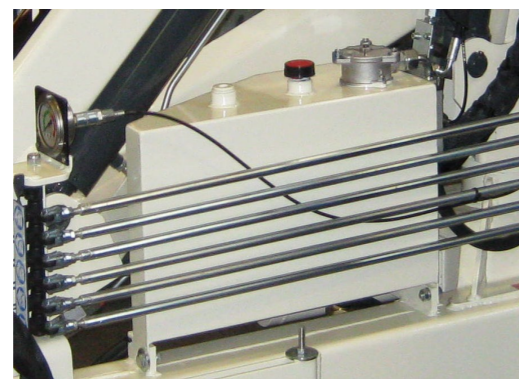
gru\_truck cranes

www.pesci-cranes.com



SE 44

QUALITY

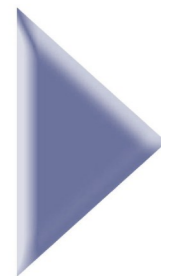


gru\_truck cranes

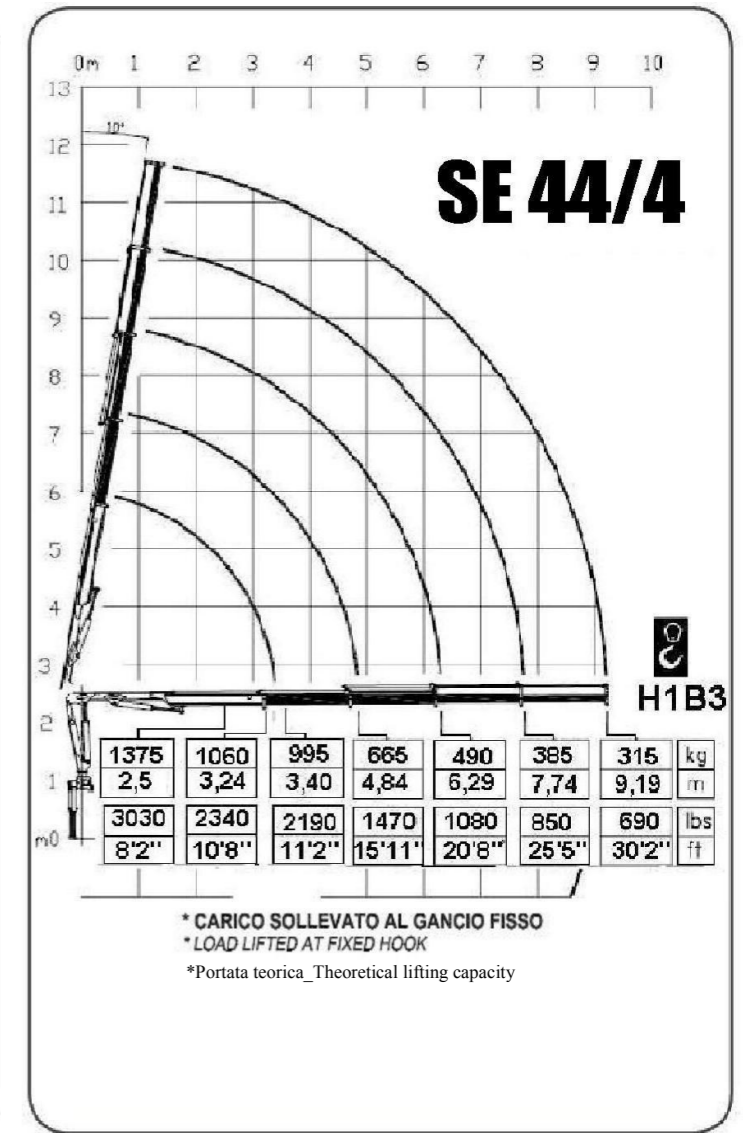
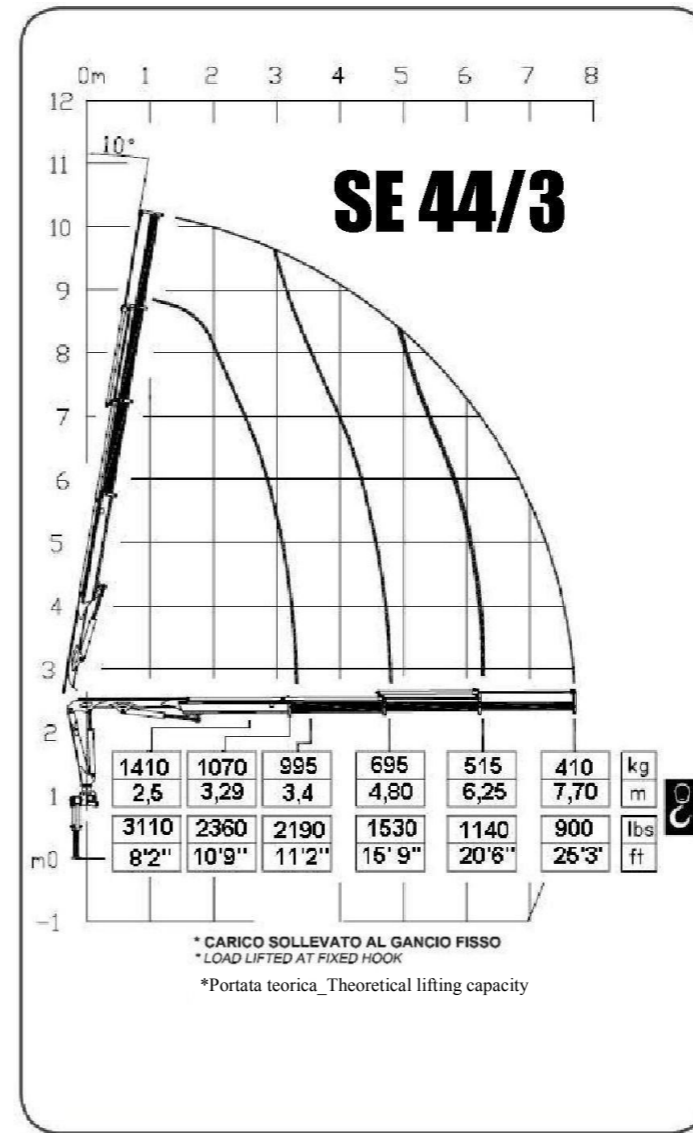
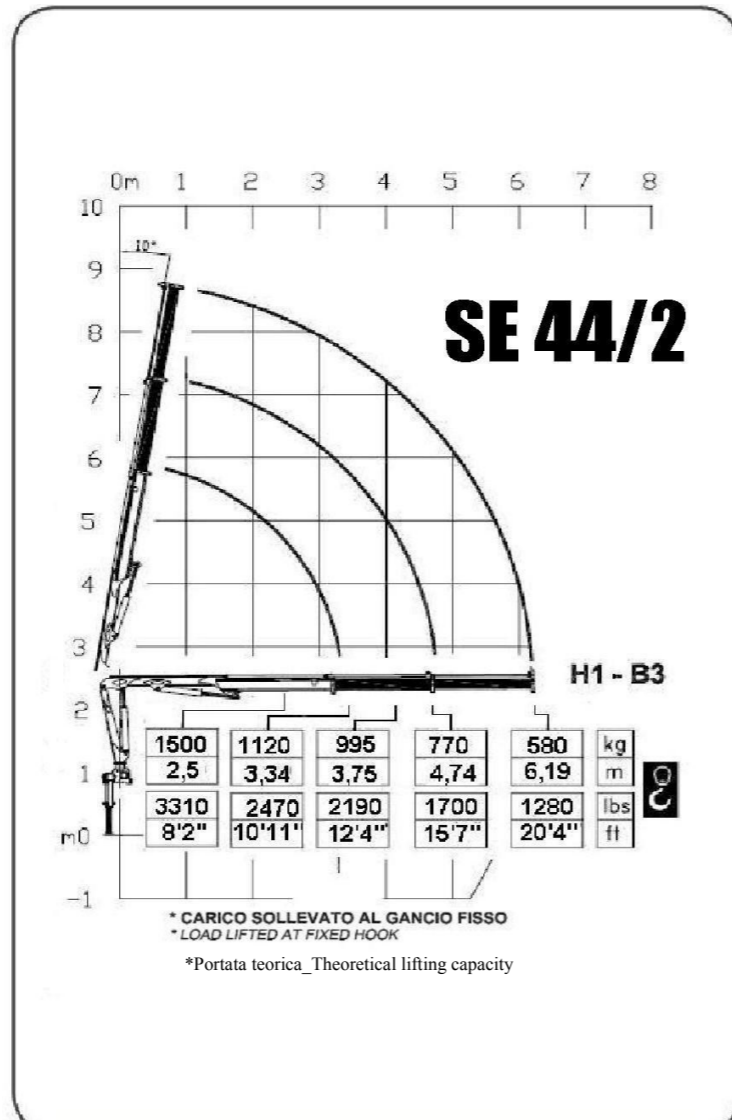
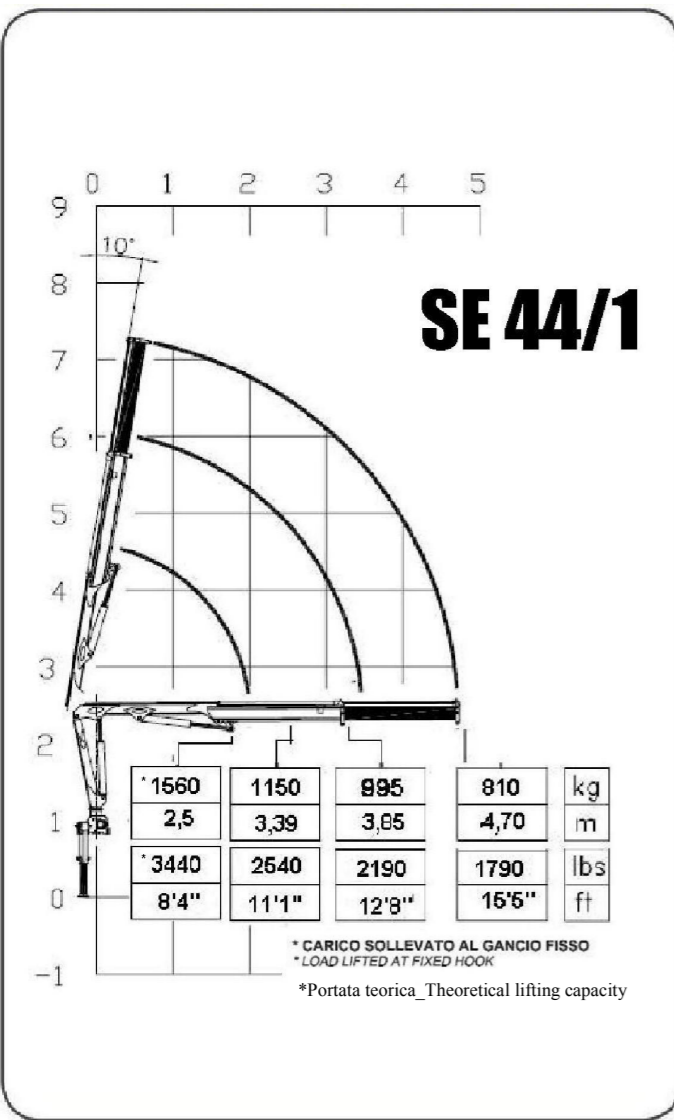


power & technology

- ▶ Scheda tecnica
- ▶ Fiche technique
- ▶ Technische daten
- ▶ Technical features
- ▶ Ficha tecnica
- ▶ Folha de dados



V. EMILIA 281 \_ 48014 CASTEL BOLOGNESE (RA) \_ ITALY  
Tel +39.0546.653.833 \_ Fax +39.0546.656.205  
e-mail: info@pesci-cranes.com \_ www.pesci-cranes.com



	1	2	3	4
- MOMENTO MAX SOLLEVAMENTO - HUBMOMENT - COUPLE DE LEVAGE - MOMENTO - MOMENTO - MAX LIFTING MOMENT	38,3 kN.m 2770 lbs.ft	36,8 kN.m 2662 lbs.ft	34,6 kN.m 2503 lbs.ft	33,7 kN.m 2438 lbs.ft
- ANGOLO DI ROTAZIONE - SCHWENKBEREICH - ROTATION - GIRO - ROTAÇÃO - SLEWING ANGLE	400°	400°	400°	400°
- COPPIA MAX ROTAZIONE - MAX SCHWENKMOMENT - COUPLE MAXI. DE ROTATION - POTENCIA MÁXIMA DE GIRO - BINARIO MÁXIMO DE ROTAÇÃO	550 daNm 3978 lbs.ft	550 daNm 3978 lbs.ft	550 daNm 3978 lbs.ft	550 daNm 3978 lbs.ft
- PRESSIONE MAX LAVORO - DRUCK - PRESSION - PRESSIÓN - PRESSÃO - MAX WORKING PRESSURE	290 bar 4205 psi	290 bar 4205 psi	290 bar 4205 psi	290 bar 4205 psi

	1	2	3	4
- PORTATA POMPA OTTIMALE - FÖRDERMENGE DER PUMPE - PORTÉE DE LA POMPE - CAUDAL DE LA BOMBA - CAUDAL DA BOMBA - RECOMMENDED PUMP DELIVERY	10 l/min 2,63 gal/min	10 l/min 2,63 gal/min	10 l/min 2,63 gal/min	10 l/min 2,63 gal/min
- CAPACITÀ SERBATOIO OLIO - FASSUNGSVERMÖGEN DEL ÖLBEHALTERS - CAPACITÉ RÉSERVOIR HUILE - CAPACIDAD DEL DEPOSITO DE ACEITE - CAPACIDAD DO DEPOSITO DE OLEO - OIL TANK CAPACITY	30 l 7,92 gal	30 l 7,92 gal	30 l 7,92 gal	30 l 7,92 gal
- VEICOLO MIN. P.T.T. - LKW MIN. G.G.W. - CAMION MIN. P.T.A.C. - CAMION PESO MIN. P.T.T. - P.B. MIN CAMION - TRUCK MIN. G.V.W.	3,5 t	3,5 t	3,5 t	3,5 t
- PESO GRU - GEWICHT - POIDS - PESO - PESO - CRANE WEIGHT	520 Kg 1060 lbs	550 Kg 1140 lbs	585 Kg 1200 lbs	610 Kg 1270 lbs

I dati e le descrizioni del presente catalogo sono forniti a titolo indicativo e non sono vincolanti. PESCI si riserva il diritto di modificarli senza preavviso.  
Technical features are not binding. PESCI reserves itself the right to any modification without notice.

