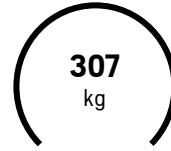


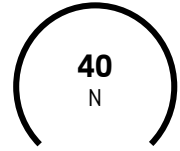
Husqvarna LG 300



PLATE
WIDTH



WEIGHT



CENTRIFUGA
L FORCE

PRODUCT VARIANT

REVERSIBLE PLATE LG 300 Hatz | 600 mm | EPA | EL

Art nr: 967 85 53-03

LG 300 is a compact, lightweight yet powerful reversible plate compactor is developed for smaller jobs, such as driveways and pathways, private house projects and narrow trenches. It is ideal when macadam beds are thinner and you need nimble, responsive handling. The Hatz 1B30 diesel engine with electric start reduces fuel consumption and emissions, quality components reduce vibrations. It is equipped with a durable Hardox 400-steel bottom plate.

ALL SPECIFICATIONS LG 300	LG 300 HATZ 600 MM EPA EL 967 85 53-03	LG 300 HATZ 500 MM MAN 967 85 53-04	LG 300 HATZ 600 MM EL 967 85 53-06	LG 300 HATZ 500 MM EL 967 85 53-07
ENGINE				
Motor/engine model	4-stroke air-cooled	4-stroke air-cooled	4-stroke air-cooled	4-stroke air-cooled
Output power (As rated by the engine/motor manufacturer)	5.6 kW	4.2 kW	4.2 kW	4.2 kW
Power/fuel type	Diesel EPA	Diesel	Diesel	Diesel
Starter	Electric	Recoil	Electric	Electric
Exhaust emissions (CO2 EU V)	587 g/kWh	987 g/kWh	986.79 g/kWh	743 g/kWh
Power source	Diesel	Diesel	Diesel	Diesel
SPECIFICATIONS				
Centrifugal force	40 N	40 N	40 N	40 N
Speed	25 m/min	25 m/min	25 m/min	25 m/min

ALL SPECIFICATIONS LG 300	LG 300 HATZ 600 MM EPA EL 967 85 53-03	LG 300 HATZ 500 MM MAN 967 85 53-04	LG 300 HATZ 600 MM EL 967 85 53-06	LG 300 HATZ 500 MM EL 967 85 53-07
Compaction indicator	No	No	No	No
DIMENSIONS				
Plate width	600 mm	500 mm	600 mm	500 mm
Plate length (mm)	600 mm	-	600 mm	-
Product size width	600 mm	500 mm	600 mm	500 mm
Weight	307 kg	282 kg	307 kg	302 kg
SOUND AND NOISE				
Sound power level, guaranteed (LWA)	108 dB(A)	105 dB(A)	105 dB(A)	105 dB(A)
Sound pressure level at operators ear	93 dB(A)	93 dB(A)	93 dB(A)	93 dB(A)