



POWER TO LIFT

# HMF 95200K-RCS

Product flyer



## Optimal strength, reach and space

Our strongest crane comes with a wide range of options, so it can be fitted to your needs. The O in OK, stands for optimized. This means that with the 95200K you get optimized reach as well as optimized space on the truck body. This equals low cost of ownership as low tare weight and reduced dimensions provide for low fuel costings as well as maximum utilization of your truck. The crane is furthermore designed with internal hose routing and in a service-friendly manner to minimise external damage and ensure a long lifespan.

### Why choose the 95200K?

- The smallest built-in dimensions in its category
- The OK boom system provides for maximum reach and utilization of the truck body
- Precise and user-friendly operation makes the crane manoeuvrable in difficult conditions

PERFORMANCE	95200K2-RCS	95200K3-RCS	95200K4-RCS	95200K5-RCS	95200K6-RCS
Load moment (tm)	80.1	79.1	77.9	77.1	76.0
Hydraulic reach (m)	8.3	10.3	12.4	14.6	16.9
Weight excl. stabilizers (kg)	5670	6020	6360	6665	6930
Weight of stabilizers, standard (kg)	1025	1025	1025	1025	1025
Lift-to-weight ratio	12.0	11.2	10.5	10.0	9.6
Continuous slewing area	∞	∞	∞	∞	∞
Slewing torque (kgm)	8163	8163	8163	8163	8163
Working pressure (bar)	365	365	365	365	365
GEOMETRY					
Height above mounting surface (mm)	2495	2495	2495	2495	2495
Width, folded (mm)	2550	2550	2550	2550	2550
Length of crane, no extra valves (mm)	1440	1440	1440	1440	1440
Over-bending on crane (°)	13	13	13	13	13
Over-bending on fly-jib (°)	-	-	-	-	19

## BASIC FEATURES

Electronic speed adaptation system, HDL-D/HD5
Progressive Crane Control (PCC)
Priority Flow Control (PFC)
Dual Power Plus link arm system
Two slewing gears
Proportional control valve PVG 32
Radio remote control of stabilizer beams and stabilizer legs on crane
Internal hose routing

## SELECTED OPTIONS

### SPECIAL OPTIONS

Fly-jib 2000 with up to 6 extensions

Power hoist HMF 3200 kg

Personnel basket

### STABILITY AND SAFETY

Electronic Vehicle Stability (EVS)

AutoSwitch (ASW)

Monitoring of stabilizer legs down (CYL)

Monitoring of stabilizer beams fully extended and stabilizer legs down (2CYBEL)

Cabin Anti-Crash (CAC)

Alarm flash on stabilizer legs

### EXTRA VALVES

2 extra valves

Extra valves in hose guides

Extra valves in hose reels, externally

Multi-coupling for 2 extra valves

### STABILIZER BEAMS AND LEGS

Hydraulic or manual stabilizer beams 8.4m

Hydraulic swing-up stabilizer legs

Footplate with ball joint on stabilizer legs

### HYDRAULICS

Oil tank 320 l mounted on the crane

Oil tank 390 l mounted on the crane

Oil cooler with temperature monitoring, q=0.4 kW/°C

Up to 12 radio remote controlled available stabilizer functions

1 radio remote controlled available proportional function (PVG32)

### CONTROL

Power radio control box with colour display

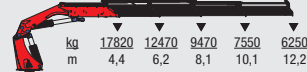
95200K2-RCS



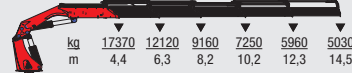
95200K3-RCS



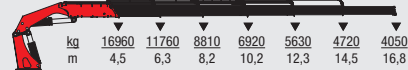
95200K4-RCS



95200K5-RCS



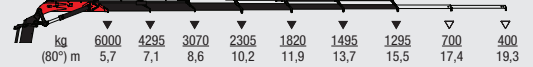
95200K6-RCS



FJ-2000



FJ-2000



▼ Lifting capacity, no manual extensions  
 ▽ Lifting capacity with manual extensions

For more information visit  
[hmfcranes.com](http://hmfcranes.com)